



PHARMEXIM INDIA

Pharmaceutical
Products

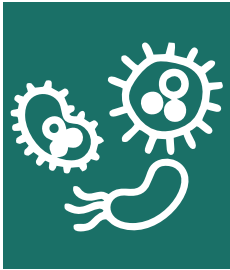
Non-Beta Lactam

| Sr.No. | Formulation | Dosage form | Packing |
|--------|--|-------------|----------|
| 1 | Amoxicillin 250 / 500 mg | Capsule | 30s/100s |
| 2 | Amoxicillin 500 mg | Tablet | 30s/100s |
| 3 | Amoxicillin 125 mg + Clavulanate Potassium 31.25mg | Suspension | 100ml |
| 4 | Amoxicillin 200 mg + Potassium Clavulanate 28.5 mg | Tablet | 30s/100s |
| 5 | Amoxicillin 250 mg + Potassium Clavulanate 62.5 mg | Tablet | 30s/100s |
| 6 | Amoxicillin 125mg / 5ml | Suspension | 100ml |
| 7 | Amoxicillin 125mg + Clavulanic Acid 31.25mg / 5ml | Suspension | 30ml |
| 8 | Amoxicillin 200mg + Clavulanic Acid 28.5mg / 5ml | Suspension | 60ml |
| 9 | Amoxicillin 250mg + Clavulanic Acid 68.5mg / 5ml | Suspension | 60/100ml |
| 10 | Amoxicillin 400mg + Clavulanic Acid 57mg / 5ml | Suspension | 70ml |
| 11 | Amoxicillin 200mg + Clavulanic Acid 56.5mg | Tablet | 30s/100s |
| 12 | Amoxicillin 250mg + Clavulanic Acid 125mg | Tablet | 30s/100s |
| 13 | Amoxicillin 500mg + Clavulanic Acid 125mg | Tablet | 30s/100s |
| 14 | Amoxicillin 875mg + Clavulanic Acid 125mg | Tablet | 30s/100s |
| 15 | Amoxicillin 125mg + | Tablet | 30s/100s |
| 16 | Bromhexine 4mg Amoxicillin 125mg + | Syrup | 60ml |
| 17 | Bromhexine 4mg dry Syrup Amoxicillin 500mg + | Tablet | 30s/100s |
| 18 | Bromhexine 16mg Amoxicillin 250mg + | Tablet | 30s/100s |
| 19 | Bromhexine 8mg Amoxicillin 500mg + | Tablet | 30s/100s |
| 20 | Clavulanate Potassium 125mg (Moxiconex-625) Ampicillin 250 / 500 mg | Capsule | 30s/100s |

Non-Beta Lactam

PHARMEXIM

| Sr.No. | Formulation | Dosage form | Packing |
|--------|--|-------------|----------|
| 21 | Amoxicillin 125mg + Cloxacillin 125mg + Lactic Acid Bacillus 30 Million Spores | Tablet | 30s/100s |
| 22 | Amoxicillin 250mg + Flucloxacillin 250mg | Capsule | 30s/100s |
| 23 | Amoxicillin 250mg + Dicloxacillin 250mg | Capsule | 30s/100s |
| 24 | Ampicillin 125mg + Cloxacillin 125mg | Tablet | 30s/100s |
| 25 | Ampicillin 250mg + Cloxacillin 250mg | Tablet | 30s/100s |
| 26 | Ampicillin 125mg / 5ml | Suspension | 100ml |
| 27 | Azithromycin 500 mg (Conithro) | Tablet | 30s/100s |
| 28 | Azithromycin 100 / 200 mg | Suspension | 15ml |
| 29 | Azithromycin Dihydrate 200mg (Conithro LSP) | Suspension | 15ml |
| 30 | Ciprofloxacin 250 mg + Tinidazole 300mg | Suspension | 60ml |
| 31 | Ciprofloxacin 250 mg + Tinidazole 300mg | Tablet | 30s/100s |
| 32 | Ciprofloxacin 500 mg + Tinidazole 600mg | Tablet | 30s/100s |
| 33 | Ciprofloxacin 250 / 500 mg | Tablet | 30s/100s |
| 34 | Clarithromycin 250 / 500 mg | Tablet | 30s/100s |
| 35 | Clarithromycin 125 mg / 5ml | Suspension | 30ml |
| 36 | Cloxacillin 250mg | Tablet | 30s/100s |
| 37 | Co-trimoxazole 240mg / 5ml | Suspension | 100ml |
| 38 | Co-trimoxazole 480mg | Tablet | 30s/100s |
| 39 | Doxacycline 100mg | Capsule | 30s/100s |
| 40 | Erythromycin Estolate 125mg / 5ml | Suspension | 100ml |
| 41 | Erythromycin Ethylsuccinate Oral Suspension | Suspension | 100ml |
| 42 | Erythromycin Stearate Dry | Syrup | 100ml |



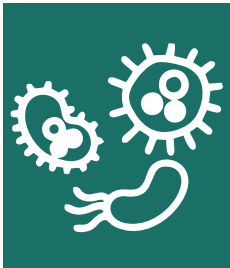
ANTI-INFECTIVE

Non-Beta Lactam

| Sr.No. | Formulation | Dosage form | Packing |
|--------|--|-------------|----------|
| 43 | Erythromycin Stearate 250 / 500 mg | Tablet | 30s/100s |
| 44 | Flucloxacillin 250 / 500 mg | Capsule | 30s/100s |
| 45 | Flucloxacillin | Suspension | 100ml |
| 46 | Gatifloxacin 200 mg + Ornidazole 500 mg | Tablet | 30s/100s |
| 47 | Gatifloxacin 400mg | Tablet | 30s/100s |
| 48 | Gemifloxacin Mesylate 320mg | Tablet | 30s/100s |
| 49 | Levofloxacin 250 / 500 mg | Tablet | 30s/100s |
| 50 | Nitazoxanide 500 mg + Ofloxacin 200mg | Tablet | 30s/100s |
| 51 | Nofloxacin 100mg + Metronidazole 100mg | Suspension | 30ml |
| 52 | Nofloxacin 400mg | Tablet | 30s/100s |
| 53 | Nofloxacin 400mg + Tinidazole 600 mg | Tablet | 30s/100s |
| 54 | Ornidazole 500 mg (Ordiconex 500) | Tablet | 30s/100s |
| 55 | Roxithromycin 50mg / 5ml | Suspension | 30ml |
| 56 | Roxithromycin 150mg | Tablet | 30s/100s |
| 57 | Roxithromycin Dispersible 50mg | Tablet | 30s/100s |
| 58 | Roxithromycin 25mg / 5ml | Suspension | 10ml |
| 59 | Sparfloxacin 200/ 400 mg | Tablet | 30s/100s |
| 60 | Itraconazole 200mg (Itraconex) | Capsule | 30s/100s |
| 61 | Terbinafine Hydrochloride 250mg (Terbiconex-250) | Tablet | 30s/100s |
| 62 | Trimethoprim 80mg + Sulphamethoxazole 400mg | Tablet | 30s/100s |
| 63 | Trimethoprim 40mg + Sulphamethoxazole 200mg | Suspension | 100ml |

Beta Lactam

| Sr.No. | Formulation | Dosage form | Packing |
|--------|---|-------------|----------|
| 1 | Cefaclor 375mg | Tablet | 30s/100s |
| 2 | Cefaclor 125 / 250 mg / 5ml | Suspension | 60ml |
| 3 | Cefadroxil 125 / 250 mg / 5ml | Suspension | 30ml |
| 4 | Cefadroxil 500mg | Tablet | 30s/100s |
| 5 | Cefadroxyl 125mg + Probenecide 125mg | Tablet | 30s/100s |
| 6 | Cefadroxyl 125mg + Probenecide 125mg / 5ml | Suspension | 30ml |
| 7 | Cefadroxyl 250mg + Probenecide 250mg | Tablet | 30s/100s |
| 8 | Cefadroxyl 500mg + Probenecide 500mg | Tablet | 30s/100s |
| 9 | Cefalexin 250 / 500 mg | Capsule | 30s/100s |
| 10 | Cefdinir 300mg | Suspension | 60ml |
| 11 | Cefdinir 125 / 250 mg / 5ml | Tablet | 30s/100s |
| 12 | Cefditoren proxetil 200/400 mg | Tablet | 30s/100s |
| 13 | Cefixime 100mg + Clavulanic acid 125mg | Tablet | 30s/100s |
| 14 | Cefixime 200mg + Clavulanic acid 125mg | Tablet | 30s/100s |
| 15 | Cefixime 50mg + Clavulanic acid 31.25mg / 5ml | Suspension | 30ml |
| 16 | Cefixime 200 (Ceficonex) | Capsule | 30s/100s |
| 17 | Cefixime 100mg / 5ml | Suspension | 30ml |
| 18 | Cefixime 200 / 400 mg | Tablet | 30s/100s |
| 19 | Cefpodoxime 200mg (Cxpod) | Tablet | 30s/100s |
| 20 | Cefpodoxime 50mg / 5ml | Suspension | 30ml |
| 21 | Cefpodoxime Proxetil 100/200mg | Tablet | 30s/100s |
| 22 | Cefuroxime axetil 250mg (Cvprox) | Tablet | 30s/100s |
| 23 | Cephalexin 125 / 250 mg / 5ml | Suspension | 100ml |
| 24 | Chloramphenicol 250mg | Capsule | 30s/100s |
| 25 | Chloramphenicol 500mg | Capsule | 30s/100s |
| 26 | Chloramphenicol Palmitate 125mg / 5ml | Suspension | 100ml |

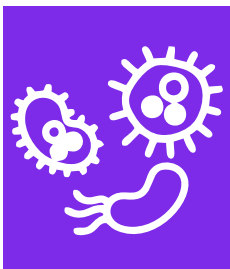


Anti Malarial

| Sr.No. | Formulation | Dosage form | Packing |
|--------|--|-------------|------------|
| 1 | Amodiaquine 100 / 200 mg | Tablet | 30s/100s |
| 2 | Amodiaquine HCl 50mg / 5ml | Suspension | 50ml |
| 3 | Artesunate 50 / 100 mg | Tablet | 30s/100s |
| 4 | Artesunate 62.5 mg + Piperaquinine 375 mg | Tablet | 30s/100s |
| 5 | Artesunate 125 mg + Piperaquinine 750 mg | Tablet | 30s/100s |
| 6 | Chloroquine 250 mg | Tablet | 30s/100s |
| 7 | Chloroquine Phosphate | Suspension | 60ml |
| 8 | Artemehter 80 mg + Lumefentarine 480 mg | Tablet | 30s/100s |
| 9 | Artemehter 20 mg + Lumefentarine 120 mg | Tablet | 30s/100s |
| 10 | Artemehter 40 mg + Lumefentarine 240 mg | Tablet | 30s/100s |
| 11 | Artemehter 180 mg + Lumefentarine 1080 mg / 60ml | Suspension | 60ml |
| 12 | Dihydroartemisinin 40 mg + Piperaquine Phosphate 320mg | Tablet | 30s/100s |
| 13 | Sulphadoxine 500mg + Pyrimethamine 25mg | Tablet | 30s/100s |
| 14 | Artesunate 100mg + Mefloquine HCL 200mg | Tablet | 30s/100s |
| 15 | Fluconazole 150mg + Azithro- mycin 1gm + Secnidazole 1gm | Tablet | 1*4 Tablet |
| 16 | Lansoprazole 30mg + Tinida- zole 1000mg + Clarithromycin 250mg | Tablet | 1*7 Tablet |
| 17 | Fluconazole 150mg + Tinidazole 1000mg | Tablet | 1 kit |
| 18 | Rabeprazole 20mg + Ornida- zole 500mg + Clarithromycin 250mg | Tablet | 1*7 Tablet |
| 19 | Ornidazole 750mg + Azithromycin 1gm | Tablet | 1*4 Tablet |
| 20 | Miconazole nitrate + Clotrimazole + Ornidazole | Tablet | 1 kit |

Anthelmintic / Antiprotozoal

| Sr.No. | Formulation | Dosage form | Packing |
|--------|--|-------------|----------|
| 1 | Albendazole 200 / 400 mg | Tablet | 30s/100s |
| 2 | Albendazole 200mg(Niworm) | Suspension | 10ml |
| 3 | Mebendazole Chewable 100 / 500 mg | Tablet | 30s/100s |
| 4 | Mebendazole 100mg / 5ml | Suspension | 30ml |
| 5 | Piperazine Citrate elixir | Suspension | 60ml |
| 6 | Diloxanide Fuorate 125 mg + Metronidazole 100mg | Suspension | 100ml |
| 7 | Diloxanide Fuorate 500 mg + Metronidazole 400mg | Tablet | 30s/100s |
| 8 | Loperamide Hydrochloride 2mg | Tablet | 30s/100s |
| 9 | Metronidazole 100mg + Norfloxacin 100mg | Suspension | 100ml |
| 10 | Metronidazole 100mg + Norfloxacin 150mg / 5ml | Suspension | 100ml |
| 11 | Metronidazole 200 / 250 / 400 / 500 mg | Tablet | 30s/100s |
| 12 | Metronidazole 125 / 200 mg / 5ml | Suspension | 100ml |
| 13 | Nalidixic Acid 500mg | Tablet | 30s/100s |
| 14 | Ornidazole 500mg(Ordiconex) | Tablet | 30s/100s |
| 15 | Secnidazole 500mg | Tablet | 30s/100s |
| 16 | Secnidazole 1g | Tablet | 30s/100s |
| 17 | Tinidazole 500mg | Tablet | 30s/100s |





| Sr.No. | Formulation | Dosage form | Packing | Sr.No. | Formulation | Dosage form | Packing |
|--------|--|-------------|----------|--------|--|-------------|----------|
| 1 | Cimetidine 200 / 400 mg | Tablet | 30s/100s | 22 | Dry Aluminium hydroxide 250 mg + Magnesium hydroxide 250mg + Sodium alginate 100 mg + Simethicone 40mg | Tablet | 30s/100s |
| 2 | Omeprazole 20 / 40 mg | Capsule | 30s/100s | 23 | Simethicone 50mg + Magnesium hydroxide 250mg + Dried Aluminium hydroxide 250 mg (Volkacid) | Suspension | 100ml |
| 3 | Omeprazole 20 mg + Domperidone 10 mg | Capsule | 30s/100s | 24 | Magnesium Trisilicate 250 mg + Dried Aluminium Hydroxide 250 mg + Simethicone Emulsion 50 mg + Liquid Sorbitol 1.25g | Suspension | 100ml |
| 4 | Gastroresistance Omeprazole 20 mg | Capsule | 30s/100s | 25 | Aluminium Hydroxide 250 mg + Magnesium hydroxide 250mg + Activated dimethicone 50mg + Sodium alginate 40mg | Suspension | 200ml |
| 5 | Esomeprazole Magnesium 20 / 40 mg | Tablet | 30s/100s | 26 | Aluminium 365mg + Magnesia 80mg + Simethicone 100mg + Liquorice 400mg | Suspension | 200ml |
| 6 | Pantoprazole delayed release 40 mg | Tablet | 30s/100s | 27 | Anise Oil 0.0008 ml + Dill Oil 0.0007ml + Peppermint Oil 0.0003ml + Palatable Aqueous | Gripe Water | 120ml |
| 7 | Esomeprazole 40mg(Coniloc-E) | Tablet | 30s/100s | 28 | Hyoscine Butylbromide 10mg | Tablet | 30s/100s |
| 8 | Esomeprazole 40 mg + Itopride 150 mg | Capsule | 30s/100s | 29 | Hyoscine Butylbromide 10mg + Paracetamol 500mg | Tablet | 30s/100s |
| 9 | Esomeprazole 40 mg + Domperidone 30 mg | Capsule | 30s/100s | 30 | Mebeverine 135mg | Tablet | 30s/100s |
| 10 | Esomeprazole 20 mg + Domperidone 30 mg | Capsule | 30s/100s | 31 | Mefenamic Acid 250mg + Dicyclomine Hcl 10mg | Tablet | 30s/100s |
| 11 | Lansoprazole 30 mg | Capsule | 30s/100s | 32 | Mefenamic Acid 250 / 500 mg | Tablet | 30s/100s |
| 12 | Pantoprazole 40 mg + Domperidone 30 mg (SR) | Capsule | 30s/100s | 33 | Simethicone Emulsion 40mg + Dicyclomine Hydrochloride 10 mg | Suspension | 30ml |
| 13 | Rabeprazole 20 mg + Domperidone 10 mg | Capsule | 30s/100s | 34 | Simethicone Emulsion 40mg + Dill Oil 0.005ml + Fennel Oil 0.0007ml | Drop | 15ml |
| 14 | Rabeprazole 20 mg | Tablet | 30s/100s | | | | |
| 15 | Pantoprazole 40 mg | Tablet | 30s/100s | | | | |
| 16 | Mebeverine 135 / 200 mg | Tablet | 30s/100s | | | | |
| 17 | Magnesium Trisilicate 500mg | Tablet | 30s/100s | | | | |
| 18 | Ranitidine 150 / 300 mg | Tablet | 30s/100s | | | | |
| 19 | Famotidine 20 / 40 mg | Tablet | 30s/100s | | | | |
| 20 | Simethicone 50mg + Magnesium Hydroxide 250mg + Dried Aluminium Hydroxide 125mg + sodium Alginate 100mg | Suspension | 200ml | | | | |
| 21 | Dried Aluminium Hydroxide 300 mg + Activated Attapulgate 50 mg + Magnesium Hydroxide 25 mg + Simethicone 25 mg | Tablet | 30s/100s | | | | |



| Sr.No. | Formulation | Dosage form | Packing |
|--------|--|-------------|----------|
| 36 | Carbocisteine 100mg + Promethazine HCL 2.5mg | Syrup | 125ml |
| 37 | Cinnarzine 25mg | Tablet | 30s/100s |
| 38 | Domperidone 10mg | Tablet | 30s/100s |
| 39 | Domperidone 10mg / 10ml | Suspension | 100ml |
| 40 | Metachlopramide 5mg / 5ml | Syrup | 100ml |

| Sr.No. | Formulation | Dosage form | Packing |
|--------|--------------------------|-------------|----------|
| 41 | Metachlopramide 1mg / ml | Drop | 15ml |
| 42 | Metoclopramide 10mg | Tablet | 30s/100s |
| 43 | Promethazine 5mg / 5ml | Syrup | 100ml |
| 44 | Promethazine 25mg | Tablet | 30s/100s |

| Sr.No. | Formulation | Dosage form | Packing |
|--------|---|-------------|----------|
| 1 | Paracetamol 125 / 500 mg | Tablet | 30s/100s |
| 2 | Paracetamol 125mg / 5ml | Syrup | 60ml |
| 3 | Paracetamol 100mg / ml | Drop | 15ml |
| 4 | Paracetamol 250mg / 5ml | Suspension | 100ml |
| 5 | Paracetamol 450mg + Orphenadrine Citrate 35mg | Tablet | 30s/100s |
| 6 | Paracetamol 325mg + Ibuprofen 400mg | Tablet | 30s/100s |
| 7 | Ibuprofen 100 mg Suspension (Ibuprofen) | Suspension | 5ml |
| 8 | Paracetamol 500mg + Caffeine 30mg + Ibuprofen 200mg | Capsule | 30s/100s |
| 9 | Nimesulide 100mg + Paracetamol 500mg | Tablet | 30s/100s |
| 10 | Paracetamol 500mg + Chloroxazone 500mg + Diclofenac Potassium 50mg | Tablet | 30s/100s |
| 11 | Paracetamol 325mg + Chloroxazone 250mg + Diclofenac Potassium 50mg | Tablet | 30s/100s |
| 12 | Paracetamol 500mg + Caffeine 30mg | Tablet | 30s/100s |
| 13 | Paracetamol 500mg + Caffeine 65mg | Tablet | 30s/100s |
| 14 | Paracetamol 500mg + Caffeine 30mg + Phenylephrine 10mg + Chlorpheniramine maleate 2mg (Coniramol) | Tablet | 30s/100s |

| Sr.No. | Formulation | Dosage form | Packing |
|--------|---|-------------|----------|
| 15 | Paracetamol 450mg + Caffeine 50mg + Codeine Phosphate 10mg + Doxylamine 5mg | Tablet | 30s/100s |
| 16 | Ibuprofen 100mg + Paracetamol 325mg(Ibuconex-P) | Tablet | 30s/100s |
| 17 | Ibuprofen 100mg / 5ml | Suspension | 100ml |
| 18 | Aceclofenac 100mg + Paracetamol 500mg + (Dolnauc/Zsac-P) | Tablet | 30s/100s |
| 19 | Aceclofenac 100mg | Tablet | 30s/100s |
| 20 | Aceclofenac 200mg (SR) | Tablet | 30s/100s |
| 21 | Acetaminophen 500mg (Acetamnophen 500) | Tablet | 30s/100s |
| 22 | Diclofenac Sodium 50 mg + Paracetamol 500 mg | Tablet | 30s/100s |
| 23 | Diclofenac Sodium 50 mg + Serratiopeptidase 10mg | Tablet | 30s/100s |
| 24 | Diclofenac 50 / 75 mg | Tablet | 30s/100s |
| 25 | Gastro-Resistant Diclofenac 50mg | Tablet | 30s/100s |



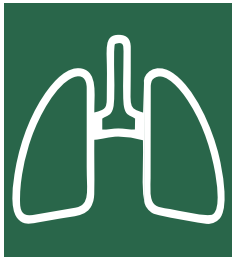
PAIN MANAGEMENT

GASTRO INTESTINAL



| Sr.No. | Formulation | Dosage form | Packing | Sr.No. | Formulation | Dosage form | Packing |
|--------|---|-------------|----------|--------|--|-------------|----------|
| 29 | Nimesulide 50mg / 5ml | Syrup | 60ml | 40 | Naproxen 500mg (SR) | Tablet | 30s/100s |
| 30 | Mefenamic Acid 250mg | Capsule | 30s/100s | 41 | Nitazoxanide 500mg | Tablet | 30s/100s |
| 31 | Mefenamic Acid 125mg / 5ml | Suspension | 100ml | 42 | Simethicone 80mg | Tablet | 30s/100s |
| 32 | Mefenamic Acid 50mg / 5ml | Suspension | 100ml | 43 | Chlorpromazine 25mg | Tablet | 30s/100s |
| 33 | Indomethacin 25mg | Capsule | 30s/100s | 44 | Cinnarizine dispersible 25mg | Tablet | 30s/100s |
| 34 | Ketorlac Tromethamine 10mg | Tablet | 30s/100s | 45 | Codeine Phosphate 15mg | Tablet | 30s/100s |
| 35 | Gastro - Resistant Aspirin 81mg / 75mg / 80mg / 300mg / 150mg / 125mg / 121mg / 120 mg / 100mg | Tablet | 30s/100s | 46 | Dextropropoxyphene 65mg + Ibuprofen 400mg | Capsule | 30s/100s |
| 36 | Etorocoxib 90mg | Tablet | 30s/100s | 47 | Tramadol 50mg | Capsule | 30s/100s |
| 37 | Piroxicam 20mg | Capsule | 30s/100s | 48 | Tramadol 100 mg / ml | Drop | 15ml |
| 38 | Meloxicam 7.5 / 15 mg | Tablet | 30s/100s | 49 | Tramadol 50 / 100 mg | Tablet | 30s/100s |
| 39 | Lornoxicam 4 / 8 mg | Tablet | 30s/100s | 50 | Tramadol 37.5 mg + Paracetamol 325 mg | Tablet | 30s/100s |

PAIN
MANAGEMENT



| Sr.No. | Formulation | Dosage form | Packing | Sr.No. | Formulation | Dosage form | Packing |
|--------|--|-------------|----------|--------|---|-------------|-----------------------|
| 1 | Tripolidine 1.25 mg + Pseudoephedrine 30mg / 5ml | Syrup | 100ml | 6 | Bromphexine HCL 8mg + Pseudo Ephedrine 60mg | Tablet | 30s/100s |
| 2 | Adhatoda Vasica 250mg + Glycyrrhiza Glabra 250mg + Ocimum Sanctum 200mg + Solanum Xanthocarpum 200mg + Piper Lingum 50mg + Zingiber Officinale 40mg + Mentha Piperita 1mg / 5ml | Syrup | 100ml | 7 | Bromphexine HCL 8mg + Pseudo Ephedrine 60mg + Menthol 5mg / 10ml | Syrup | 120ml |
| 3 | Adhatoda Vasica 250mg + Glycyrrhiza Glabra 250mg + Ocimum Sanctum 200mg + Solanum Xanthocarpum 200mg + Piper Lingum 50mg + Zingiber Officinale 40mg + Mentha Piperita 1mg + Honey 200mg / 5ml | Syrup | 100ml | 8 | Bromphexine hydrochloride 4mg / 5ml | Solution | 100ml |
| 4 | Ambroxol 30 / 75 mg | Tablet | 30s/100s | 9 | Bromphexine Hcl 8mg + Pseudoephedrine Hcl 60mg | Tablet | 30s/100s |
| 5 | Ambroxol HCL 75mg + Levocetirizine 5mg | Capsule | 30s/100s | 10 | Carbocisteine 2% / 5% | Syrup | 100ml/200 ml 100ml |
| | | | | 11 | Chlorpheniramine Maleate 2mg + Dextromorphen HBR 10mg + Guaifenesin 100mg / 5ml | Syrup | ml 100ml |
| | | | | 12 | Codeine Phosphate 10mg + C.P.Maleate 4mg / 5ml | Syrup | 100ml |
| | | | | 13 | Cpm 2mg + Codeine 10mg | Tablet | 30s/100s |
| | | | | 14 | Dextromethorphan Hbr 10mg + C.P.Maleate 4mg + Guaiphenesin 100mg / 5ml | Syrup | 100ml |

RESPIRATORY

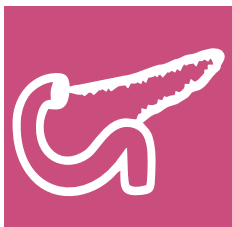


| Sr.No. | Formulation | Dosage form | Packing | Sr.No. | Formulation | Dosage form | Packing |
|--------|--|-------------|------------|--------|--|-------------|----------|
| 15 | Diphenhydramine Hydrochloride 14.1mg / 5ml | Solution | 100ml | 34 | Chlorphenamine Maleate 2mg | Syrup | 60ml |
| 16 | Guaifenesin 50mg + Bromhexine Hcl 2mg + Terbutaline 1.25mg + Levomenthol 0.5mg / 5ml | Syrup | 100ml | 35 | Fexofenadine Hydrochloride 120 / 180 mg | Tablet | 30s/100s |
| 17 | Guaiphenesin 100mg + Dextromethorphan HBR | Tablet | 30s/100s | 36 | Loratidine 10mg | Tablet | 30s/100s |
| 18 | Terbutaline 5 / 7.5 mg | Tablet | 30s/100s | 37 | Loratidine 5mg / 5ml | Syrup | 100ml |
| 19 | Terbutaline Sulphate 1.25mg + Bromhexine HCL 2mg + Guaiphenesin 50mg + Menthol 0.5mg / 5ml | Syrup | 100ml | 38 | Salbutamol 2mg / 5ml | Syrup | 100ml |
| 20 | Paracetamol 125mg + Dextromethorphan 5mg + Cetrizine 2.5mg | Tablet | 30s/100s | 39 | Salbutamol 4mg | Tablet | 30s/100s |
| 21 | Ambroxol 75mg + Levocetrizine 5mg | Capsule | 30s/100s | 40 | Salbutamol 2mg + Theopohyline 120mg | Tablet | 30s/100s |
| 22 | Phenylephrine Hcl 2.5mg + Chlorphenamine Maleate 2.0mg | Drop | 15ml/30ml | 41 | Salbutamol 2mg | Tablet | 30s/100s |
| 23 | Paracetamol 750mg + Ceffeine 30mg + Phenylephrine 10mg + Pheniramine Maleate 20mg | Powder | 5*1 Sachet | 42 | Salbutamol 1mg + Bromhexine HCL 2mg + Guaifensin 50mg | Syrup | 100ml |
| 24 | Paracetamol 125mg + CPM 1mg + Phenylephrine 5mg /5ml | Syrup | 50ml | 43 | Aminophyllin 100mg | Tablet | 30s/100s |
| 25 | Paracetamol 500mg + Caffeine 16mg + Phenylephrine 5mg + CPM 2mg | Tablet | 30s/100s | 44 | Prolonged release Aminophyllin 225mg | Tablet | 30s/100s |
| 26 | Tripolidine HCL 2.5mg + Pseudoephedrine HCL 60mg | Tablet | 30s/100s | 45 | Ketotifen 1mg / 5ml | Syrup | 100ml |
| 27 | Cetrizine 5mg / 5ml | Syrup | 60ml | 46 | Montelukast 10mg + Levocetrizine Hydrochloride 5mg | Tablet | 30s/100s |
| 28 | Cetrizine Hydrochloride 10mg / 5ml (Cetquino) | Suspension | 60ml | 47 | Montelukast 4mg + Levocetrizine Hydrochloride 2.5mg | Tablet | 30s/100s |
| 29 | Cetrizine HCL 5/10mg | Tablet | 30s/100s | 48 | Montelukast 4mg + Levocetrizine Hydrochloride 2.5mg / 5ml | Suspension | 30ml |
| 30 | Chlorphenamine 4mg | Tablet | 30s/100s | 49 | Montelukast 5mg + Levocetrizine Hydrochloride 2.5mg | Tablet | 30s/100s |
| 31 | Desloratidine 0.5mg/ml | Syrup | 100ml | 50 | Montelukast sodium 5mg | Tablet | 30s/100s |
| 32 | Desloratidine 5mg | Tablet | 30s/100s | 51 | Dextromethorphan Hydrobromide 15mg + Phenylepherine Hydrochloride 5 mg + chloepheniramine Maleate 2mg (Respiconex-D) | Syrup | 100ml |
| 33 | Dexchlorpheniramine 2mg/5ml | Syrup | 100ml | 52 | Ambroxol Hydrochloride 15mg + Guaiphenesin 50mg + Terbutaline Sulphate 1.25mg (Respiconex-A) | Syrup | 100ml |



| Sr.No. | Formulation | Dosage form | Packing |
|--------|--|-------------|----------|
| 1 | Amlodipine 5 / 10 mg | Tablet | 30s/100s |
| 2 | Amiloride 5mg + | Tablet | 30s/100s |
| 3 | Hydrochlorothiazide 50mg | Tablet | 30s/100s |
| 4 | Atenolol 50 / 100 mg | Tablet | 30s/100s |
| 5 | Atenolol 50 + Amlodipine 5mg | Tablet | 30s/100s |
| 6 | Atorvastatin 10 / 20 mg | Tablet | 30s/100s |
| 7 | Captopril 25 / 50 mg | Tablet | 30s/100s |
| 8 | Clopidogrel 75 / 150 mg | Tablet | 30s/100s |
| 9 | Diltiazem Hydrochloride 30mg / 60mg / 90 mg / 120 mg | Tablet | 30s/100s |
| 10 | Enalapril Maleate 5 / 10 mg | Tablet | 30s/100s |
| 11 | Ezetimibe 10mg | Tablet | 30s/100s |
| 12 | Hydrochlorothiazide 25 / 50 mg | Tablet | 30s/100s |
| 13 | Irbesartan 150 mg + Hydrochlorothiazide 12.5 mg | Tablet | 30s/100s |
| 14 | Irbesartan 300 mg + Hydrochlorothiazide 300 mg | Tablet | 30s/100s |
| 15 | Irbesartan 150 / 300 mg | Tablet | 30s/100s |
| 16 | Lisinopril 5mg / 10mg / 20mg / 25mg / 50mg | Tablet | 30s/100s |
| 17 | Losartan 100mg + Hydrochlorothiazide 12.5mg | Tablet | 30s/100s |
| 18 | Losartan 100mg + Hydrochlorothiazide 25mg | Tablet | 30s/100s |

| Sr.No. | Formulation | Dosage form | Packing |
|--------|---|-------------|----------|
| 19 | Losartan Potassium 25mg / 50mg / 100mg | Tablet | 30s/100s |
| 20 | Metoprolol Succinate Extended release 50 / 100 mg | Tablet | 30s/100s |
| 21 | Metoprolol Tartarate 50/100 mg | Tablet | 30s/100s |
| 22 | Nifedipine 10mg / 20mg / 30mg (Nifedipine) | Tablet | 30s/100s |
| 23 | Pioglitazone 15 / 30 mg | Tablet | 30s/100s |
| 24 | Propranolol 40mg | Tablet | 30s/100s |
| 25 | Ramipril 5 / 10 mg | Tablet | 30s/100s |
| 26 | Rosiglitazone 2mg / 4mg / 8mg | Tablet | 30s/100s |
| 27 | Rosuvastatin 5 / 10 mg | Tablet | 30s/100s |
| 28 | Simvastatin 5 / 10 / 20 mg | Tablet | 30s/100s |
| 29 | Spirolactone 25 / 100 mg | Tablet | 30s/100s |
| 30 | Telmisartan 80mg + Amlodipine 10mg | Tablet | 30s/100s |
| 31 | Telmisartan 80mg + Hydrochlorothiazide 12.50mg | Tablet | 30s/100s |
| 32 | Telmisartan 80mg | Tablet | 30s/100s |
| 33 | Valsartan 80 / 160 mg | Tablet | 30s/100s |



| Sr.No. | Formulation | Dosages form | Packing |
|--------|---|--------------|----------|
| 1 | Glibenclamide 2.5mg + Metformin 400mg | Tablet | 30s/100s |
| 2 | Glibenclamide 5mg + Metformin Hydrochloride 500mg | Tablet | 30s/100s |
| 3 | Glibenclamide 5mg | Tablet | 30s/100s |
| 4 | Gliclazide 80mg + Metformin Hydrochloride 500mg | Tablet | 30s/100s |
| 5 | Gliclazide 30mg / 60mg / 80mg | Tablet | 30s/100s |

| Sr.No. | Formulation | Dosages form | Packing |
|--------|---|--------------|----------|
| 6 | Glimepiride 1mg + Metformin 500mg | Tablet | 30s/100s |
| 7 | Glimepiride 1mg / 2mg / 3mg / 4mg | Tablet | 30s/100s |
| 8 | Glimepiride 5mg + Metformin Hydrochloride 500mg | Tablet | 30s/100s |
| 9 | Metformin 500mg / 850mg / 1000mg | Tablet | 30s/100s |

CARDIOVASCULAR AGENT

ANTI-DIABETIC



| Sr.No. | Formulation | Dosage form | Packing |
|--------|--|-------------|----------|
| 1 | Gabapentin 300mg(Gabpent) | Tablet | 30s/100s |
| 2 | Amitriptyline 25mg | Tablet | 30s/100s |
| 3 | Cabergoline 0.5mg | Tablet | 30s/100s |
| 4 | Sodium Valproate 100 / 200 mg | Tablet | 30s/100s |
| 5 | Pregabalin 75mg / 150 mg | Capsule | 30s/100s |
| 6 | Sumatriptan 50mg / 100 mg | Tablet | 30s/100s |
| 7 | Alprazolam 0.5mg / 0.25 mg | Tablet | 30s/100s |
| 8 | Carbamazepine 100mg / 5ml | Suspension | 200ml |
| 9 | Carbamazepine 200mg | Tablet | 30s/100s |
| 10 | Chlorpromazine 25mg / 50mg / 100mg / 200mg | Tablet | 30s/100s |
| 11 | Clonazepam 2mg | Tablet | 30s/100s |
| 12 | Diazepam 10mg | Tablet | 30s/100s |
| 13 | Donepezil 5mg / 10mg | Tablet | 30s/100s |
| 14 | Escitalopram 10mg / 20mg | Tablet | 30s/100s |
| 15 | Escitalopram 10mg / 20mg | Tablet | 30s/100s |

| Sr.No. | Formulation | Dosage form | Packing |
|--------|---|-------------|----------|
| 16 | Imapramin 25mg | Tablet | 30s/100s |
| 17 | Olnazapine 5mg / 10mg | Tablet | 30s/100s |
| 18 | Phenobarbital 30mg / 50mg / 60mg / 100mg | Tablet | 30s/100s |
| 19 | Phenyton Sodium 100mg | Capsule | 30s/100s |
| 20 | Pregabalin 75mg + Nortriptyline Hydrochloride 10mg(Prenor) | Tablet | 30s/100s |
| 21 | Resperidone 1mg / 2mg / 4mg | Tablet | 30s/100s |
| 22 | Sertaline 100mg | Tablet | 30s/100s |
| 23 | Trihexyphenidyl Hydrochloride 5mg (Benzhexol Hydrochloride) | Tablet | 30s/100s |
| 24 | Trihexyphenidyl 2mg / 5mg (Benzhexol Tablet) | Tablet | 30s/100s |
| 25 | Zopiclone 7.5mg | Tablet | 30s/100s |

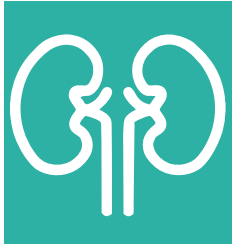
CNS



| Sr.No. | Formulation | Dosage form | Packing |
|--------|--|-------------|---------|
| 1 | Sildenafil Citrate 100mg + Dapoxetine Hydrochloride 60mg | Tablet | 4s/10s |
| 2 | Sildenafil Citrate 50 / 100mg (Conigra) | Tablet | 4s/10s |
| 3 | Dapoxetine 30 / 60 mg | Tablet | 4s/10s |

| Sr.No. | Formulation | Dosage form | Packing |
|--------|---|-------------|---------|
| 4 | Sildenafil Citrate 50mg + Dapoxetine Hydrochloride 30mg | Tablet | 4s/10s |
| 5 | Tadalafil 20mg | Tablet | 4s/10s |
| 6 | Tadalafil Citrate 20mg + Dapoxetine Hydrochloride 60mg | Tablet | 4s/10s |

ERECTILE DYSFUNCTION



| Sr.No. | Formulation | Dosage form | Packing | Sr.No. | Formulation | Dosage form | Packing |
|--------|--|-------------|----------|--------|--|-------------|----------|
| 1 | Allopurinol 100 / 300mg | Tablet | 30s/100s | 15 | Finasteride 5mg | Tablet | 30s/100s |
| 2 | Flavoxate 200mg | Tablet | 30s/100s | 16 | Dutasteride 0.5 mg | Tablet | 30s/100s |
| 3 | Tamsulosin 0.4mg (SR) + Finasteride 5mg | Capsule | 30s/100s | 17 | Dutasteride 0.5 mg + Tamsulosin 0.4mg | Tablet | 30s/100s |
| 4 | Acetazolamide 250mg | Tablet | 30s/100s | 18 | Tamsulosin 200 / 400 mg | Capsule | 30s/100s |
| 5 | Spironolactone 25 / 100 mg | Tablet | 30s/100s | 19 | Hyoscine Butylbromide 10mg | Tablet | 30s/100s |
| 6 | Spironolactone 50mg + Frusemide 20 mg | Tablet | 30s/100s | 20 | Phenazopyridine 100/200 mg | Tablet | 30s/100s |
| 7 | Spironolactone 50mg + Frusemide 20 mg | Tablet | 30s/100s | 21 | Prazosin 1 / 2 / 5 mg | Tablet | 30s/100s |
| 8 | Torasemide 5 / 10 / 20 / 100 mg | Tablet | 30s/100s | 22 | Terazosin 1 / 2 / 5 mg | Tablet | 30s/100s |
| 9 | Frusemide 40mg | Tablet | 30s/100s | 23 | Tolterodine 1 / 2 / 4 mg | Capsule | 30s/100s |
| 10 | Indapamide 40mg + Amiloride 5mg | Tablet | 30s/100s | 24 | Alfuzosin 10mg | Tablet | 30s/100s |
| 11 | Furosemide 40mg + Amiloride 5mg | Tablet | 30s/100s | 25 | Tolterodine Tart 2 / 4 mg + Tamsulosin 0.4mg | Tablet | 30s/100s |
| 12 | Amiloride 5mg + Hydrochlorothiazide 50mg | Tablet | 30s/100s | 26 | Phenazopyridine 100 mg + Ciprofloxacin 500 mg | Tablet | 30s/100s |
| 13 | Alfuzosin 10 mg + Dutasteride 0.5mg | Tablet | 30s/100s | 27 | Phenazopyridine 100 mg + Norfloxacin 400mg | Tablet | 30s/100s |
| 14 | Tolterodine Tart 4 mg (ER) + Tamsulosin 0.4 mg (ER) | Tablet | 30s/100s | | | | |



| Sr.No. | Formulation | Dosage form | Packing | Sr.No. | Formulation | Dosage form | Packing |
|--------|--|-------------|-------------|--------|--|-------------|-------------|
| 1 | Clotrimazole Pessary base 500mg (Vogyna-CL) | Pessary | 1*5 Pessary | 4 | Nystatine Passary base 100000IU (Vogyna-Ny) | Pessary | 1*5 Pessary |
| 2 | Metronidazole Suppository base 500mg (Vogyna-M) | Suppository | 1*5 Supp. | 5 | Acetaminofen 250mg (Acetaminofen 250) | Suppository | 1*5 Supp. |
| 3 | Diclofenac Potassium 12.5mg | Suppository | 1*5 Supp. | | | | |



| Sr.No. | Formulation | Dosage form | Packing | Sr.No. | Formulation | Dosage form | Packing |
|--------|---|-------------|----------|--------|---|-------------|---------|
| 1 | Aciclovir 5% w/w | Cream | 5gm | 26 | Ketoconazole 2% + ZPTO 1% + Aloe vera 10% | Shampoo | 120ml |
| 2 | Adapalene 0.1% w/w | Cream | 15gm | 27 | Mepyramine Maleate 2% w/w | Cream | 500gm |
| 3 | Benzyl Peroxide 10% | Cream | 30gm | 28 | Miconazole Nitrate 2% w/w | Cream | 120gm |
| 4 | Betamethasone 0.05% | Cream | 30gm | 29 | Mometasone furoate 0.1% + Miconazole 2% | Cream | 30gm |
| 5 | Clobetasol 0.05% w/w | Cream | 20gm | 30 | Mometasone furoate 0.1% + Silicylic acid 5% | Ointment | 30gm |
| 6 | Clobetasol 0.05% w/w | Ointment | 20gm | 31 | Mometasone furoate 0.1% | Cream | 30gm |
| 7 | Clotrimazole 1% w/w (Yclozol) | Cream | 20gm | 32 | Mometasone furoate 0.1% | Ointment | 30gm |
| 8 | Clotrimazole 10mg | Lozenges | 30s/100s | 33 | Mupirocin 1%w/w (Mupidex) | Ointment | 15gm |
| 9 | Clotrimazole Topical 1% | Solution | 30ml | 34 | Nifedipine 0.3mg w/w + Lidocaine 1.5mg w/w | Cream | 30gm |
| 10 | Clotrimazole Vaginal 1% w/w | Cream | 50gm | 35 | Permethrin 5% w/w(Percon) | Cream | 30gm |
| 11 | Betamethasone Valerate 0.1% w/w + Neomycin Sulfate 0.5% w/w | Ointment | 20gm | 36 | Piroxicam 0.5% w/w | Gel | 30gm |
| 12 | Betamethasone Valerate 0.1% w/w | Ointment | 20gm | 37 | Tacrolimus 0.1% | Ointment | 15gm |
| 13 | Chlorhexidine digluconate 1.33 gm + Hexamidine diisetionate 0.25mg | Liquid | 100ml | 38 | Tretinoin 0.05% | Cream | 30gm |
| 14 | Fusidic Acid 2mg/gm | Cream | 15gm | 39 | Zinc Oxide 20% | Cream | 30gm |
| 15 | Gentamicin Sulphate 0.1% w/w + Beclomethasone Dipropionate 0.025% w/w + Clotrimazole 1% w/w | Cream | 15gm | 40 | Tannic Acid 5.0% + Choline Salicylate Soln 8.0% + Cetrimide 0.01% + Lignocaine Hcl 2.0% + Glycerine | Gel | 15ml |
| 16 | Hydrocortisone 0.5% w/v | Cream | 15gm | 41 | Potassium Nitrate 3% w/v + Sodium Fluoride 0.2% w/v | Mouth Wash | 100ml |
| 17 | Hydrocortisone 1% w/v | Ointment | 15gm | 42 | Beclomethasone Dipropionate 0.025%w/w + Gentamycin Sulphate 0.050%w/w + Miconazole Nitrate 1.000%w/w + Cream base 0.1005w/w | Cream | 15gm |
| 18 | Hydrocortisone 0.5% w/v | Ointment | 15gm | 43 | Chlorhexidine 0.2% w/v + Zinc Chloride 0.09% w/v + Sodim Fluoride 0.05% w/v | Mouth Wash | 100ml |
| 19 | Hydrocortisone 1% w/v | Cream | 15gm | 44 | Triamcinolone Oromucosal Paste 0.1% w/w | Paste | 30gm |
| 20 | Hydroquinone 2% / 4% | Cream | 30gm | 45 | Povidone Iodine USP 5.00% w/w(Conidone) | Ointment | 15gm |
| 21 | Ketoconazole 2% + Aloe Vera 10% + ZPTO 1% | Cream | 120ml | | | | |
| 22 | Ketoconazole 2% + Aloe Vera 10% + ZPTO 1% | Lotion | 60ml | | | | |
| 23 | Ketoconazole 2% w/w | Cream | 30gm | | | | |
| 24 | Ketoconazole 2% w/v | Shampoo | 120ml | | | | |
| 25 | Lactic acid 1.2% w/v | Gel | 100ml | | | | |

OINTMENT / LOTION
LIQUID



| Sr.No. | Formulation | Dosage form | Packing | Sr.No. | Formulation | Dosage form | Packing |
|--------|--|-------------|---------|--------|--|-------------|---------|
| 47 | Diclofenac diethylamine 1.16 % w/w + Linseed oil 3.00 % w/w + Methyl Salicylate 10.00 % w/w + Menthol 5.00 % w/w + Benzyl alcohol BP 1.0 % w/w (Lonac-D) | Gel | 30gm | 49 | Hydrocortisone Acetate 1.00% w/w + Methyl Paraben 0.15% w/w + Propyl Paraben 0.05% w/w | Cream | 15gm |
| 48 | Beclomethasone Dipropionate 0.025 % w/w + Ketoconazole 2.0 % w/w + Neomycin Sulphate 0.50 % w/w (Kozon) | Cream | 15gm | 50 | Hydroquinone 2.0%w/w + Tretinoin 0.025%w/w + Mometasone Furoate 0.100% w/w(Deroten) | Cream | 15gm |



| Sr.No. | Formulation | Dosage form | Packing | Sr.No. | Formulation | Dosage form | Packing |
|--------|--|-------------|------------------|--------|--|-------------|------------------|
| 1 | Chloramphenicol Opth.Soln 0.1% w/v | Drop | 10ml LDPE Bottle | 13 | Phenylephrine Hcl Opth. Soln. 2.5% w/v + 10% w/v | Drop | 5ml LDPE Bottle |
| 2 | Ciprofloxacin 0.3%w/v + Dexamethasone Opth.Soln. 0.1%w/v | Drop | 5ml LDPE Bottle | 14 | Prednisolone Acetate Opth. Suspension 10mg/ml | Drop | 10ml LDPE Bottle |
| 3 | Cyclopentolate Hydrochloride Opth.Soln. 1% w/v | Drop | 5ml LDPE Bottle | 15 | Timolol Maleate Opth. Soln. 0.25% w/v / 0.5% w/v | Drop | 5ml LDPE Bottle |
| 4 | Dexamethasone 0.1% w/v + Chloramphenicol 0.5% w/v | Drop | 5ml LDPE Bottle | 16 | Tobramycin 0.3% w/v + Dexamethasone 0.1% w/v | Drop | 5ml LDPE Bottle |
| 5 | Dexamethasone Sodium Phosphate Opth.Soln. 0.1%w/v | Drop | 5ml LDPE Bottle | 17 | Tobramycin 0.3% | Drop | 5ml LDPE Bottle |
| 6 | Diclofenac Sodium Opth.Soln 0.1% w/v | Drop | 5ml LDPE Bottle | 18 | Travoprost 2mg / ml | Drop | 5ml LDPE Bottle |
| 7 | Gatifloxacin 0.3% | Drop | 5ml LDPE Bottle | 19 | Pefloxacin 0.3% w/v | Drop | 5ml LDPE Bottle |
| 8 | Gentamicin 0.3% w/v + Dexamethasone 0.1% w/v | Drop | 5ml LDPE Bottle | 20 | Flurometholone 0.1% w/v | Drop | 10ml LDPE Bottle |
| 9 | Lomefloxacin 0.3% w/v | Drop | 5ml LDPE Bottle | 21 | Antazoline HCL 0.05% w/v + Tetryzoline HCL 0.04% w/v | Drop | 10ml LDPE Bottle |
| 10 | Neomycin Sulphate 0.5% w/v + Dexamethasone Sodium Phosphate 0.1% w/v | Drop | 5ml LDPE Bottle | 22 | Chloramphenicol 5mg + Dexamethasone Sodium 1mg + Tetryzoline HCL 0.25mg / ml | Drop | 5ml LDPE Bottle |
| 11 | Ofloxacin 0.3% w/v + Dexamethasone 0.1% w/v | Drop | 5ml LDPE Bottle | 23 | Tetryzoline HCL 0.25mg + Fluorometholone 1.0mg / ml | Drop | 5ml LDPE Bottle |
| 12 | Ofloxacin 3mg / ml | Drop | 5ml LDPE Bottle | 24 | Gentamycin 0.3% w/v | Drop | 5ml LDPE Bottle |



| Sr.No. | Formulation | Dosage form | Packing | Sr.No. | Formulation | Dosage form | Packing |
|--------|--|-------------|------------------|--------|---|-------------|------------------|
| 25 | Latanoprost 0.05mg + Timolol 5.0mg / ml | Drop | 5ml LDPE Bottle | 39 | Fluticasone Furoate 0.02% + Azelastine HCL 0.1% w/v | Spray | 70 Metered Dose |
| 26 | Ciprofloxacin 0.3% w/v + Dexamethasone 0.1% w/v | Drop | 5ml LDPE Bottle | 40 | Fluticasone Furoate 0.055% w/v | Spray | 120 Metered Dose |
| 27 | Chloramphenicol 1.5 % w/v / 5.0% w/v | Drop | 10ml LDPE Bottle | 41 | Azelastine Hydrochloride 0.0357% + Fluticasone Propionate 0.10% w/v | Spray | 70 Metered Dose |
| 28 | Lidocaine HCL 2% w/v + Clotrimazole 1% + Ofloxacin 0.3% + Beclometasone 0.025% | Drop | 5ml LDPE Bottle | 42 | Fluticasone Propionate Aqueous 0.05% w/v | Spray | 100 Metered Dose |
| 29 | Chlorobutamol 5.0% + Benzocaine 2.7% + Paradichlorobenzene 2.0% + Turpentine Oil 15.0% | Drop | 10ml LDPE Bottle | 43 | Olopatadine 0.6% w/v | Spray | 120 Metered Dose |
| 30 | Ciprofloxacin 2mg/ml | Drop | 5ml LDPE Bottle | 44 | Xylometazoline Hydrochloride 0.05% + Ipratropium Bromide 0.06% w/v | Spray | 70 Metered Dose |
| 31 | Betamethasone 0.1% w/v + Hypromellose 0.25 w/v | Drop | 5ml LDPE Bottle | 45 | Mometasone Furoate Monohydrate 0.05% w/v | Spray | 100 Metered Dose |
| 32 | Betamethasone 0.1% w/v + Neomycin 0.5% w/v + Hypromellose 0.25 w/v | Drop | 5ml LDPE Bottle | 46 | Mometasone Aqueous 0.05% w/v | Spray | 100 Metered Dose |
| 33 | Gentamicin 0.1% / 0.3% w/v | Drop | 5ml LDPE Bottle | 47 | Fluticasone Furoate 27.5mcg | Spray | 120 Metered Dose |
| 34 | Polymyxin B Sulphate 5000IU + Chloramphenicol 5mg + Dexamethasone Sodium Phosphate 1mg | Drop | 5ml LDPE Bottle | 48 | Olopatadine HCL Fluticasone Propionate 0.6%/0.025% w/v | Spray | 100 Metered Dose |
| 35 | Polymyxin B Sulphate 5000IU + Chloramphenicol 5mg | Drop | 5ml LDPE Bottle | 49 | Xylometazoline 0.05% + w/v | Spray | 10ml |
| 36 | Prednisolone Acetate 1.0% w/v + Gentamycin 0.3% | Drop | 5ml LDPE Bottle | | | | |
| 37 | Neomycin Sulphate 0.5% w/w + Dexamethasone Sodium Phosphate 0.1% w/w | Drop | 5ml LDPE Bottle | | | | |
| 38 | Betamethasone Sodium Phosphate 0.1% + Neomycin Sulfate 0.5% | Drop | 5ml LDPE Bottle | | | | |

SMALL VOLUME INJECTION

PHARMEXIM

| Sr.No. | Formulation | Dosage form | Packing | Sr.No. | Formulation | Dosage form | Packing |
|--------|--|-------------|---------|--------|--|-------------|-------------|
| 1 | Amikacin Sulphate 100mg / 250mg / 500mg / 2ml | Vial | 1 Vial | 30 | Lidocaine Hydrochloride 5% + Dextrose 7.5% | Ampoule | 5*2ml |
| 2 | Atenolol 0.5mg / ml | Injection | 10ml | 31 | Isoniazid 10% w/v | Ampoule | 10*5ml |
| 3 | Artemether 40mg / ml | Ampoule | 6*1ml | 32 | Iron Sucrose 20mg / ml | Ampoule | 5*5ml |
| 4 | Artemether 80 mg / 100mg / ml | Ampoule | 6*1ml | 33 | Ketorolac Tromethamine 30mg | Ampoule | 10*1ml |
| 5 | α - β Arteether 75mg/ml | Ampoule | 3*2ml | 34 | Lignocaine with Adrenaline 0.0125mg/24.64mg / ml | Vial | 5ml Vial |
| 6 | Aminophylline 25mg / ml | Injection | 10*10ml | 35 | Lincomycin 600mg / 2ml | Vial | 2ml Vial |
| 7 | Adrenalin 1mg / 1ml | Ampoule | 5*1ml | 36 | Lidocaine 1%/2% w/v | Vial | 20ml Vial |
| 8 | Atropine 0.5mg/0.6mg / ml | Ampoule | 5*1ml | 37 | Levocarnitine 1g / 5ml | Injection | 5*5ml |
| 9 | Benztropine Mesylate 1mg /ml | Ampoule | 2ml | 38 | Metoclopramide Hydrochloride 5mg / ml | Ampoule | 10*2ml |
| 10 | Vit B1 10mg + Vit B2 2mg + Vit B6 2mg + Nicotinamide 100mg+Dexpanthenol 5mg/ml | Ampoule | 10*2ml | 39 | Methylergometrine Maleate 0.2mg / ml | Ampoule | 1vial + WFI |
| 11 | Chloroquine Phosphate 40mg/ml | Ampoule | 1*5ml | 40 | Meloxicam 15mg / 1.5ml | Ampoule | 5*1.5ml |
| 12 | Clindamycin 150mg / ml | Ampoule | 1*4ml | 41 | Milirinone 1mg / ml | Ampoule | 1*10ml |
| 13 | Cynocobalamine 1000mcg / ml | Vial | 10ml | 42 | Magnesium Sulphate 10% w/v | Ampoule | 1*10ml |
| 14 | Chlorapheniramine 10mg / ml | Ampoul | 10*1ml | 43 | Nitroglycerin 5mg / 5ml | Ampoule | 1*5ml |
| 15 | Dexamethasone Sodium Phosphate 8mg / 2ml | Ampoul | 100*2ml | 44 | Noradrenaline 8mg / 4ml | Ampoule | 1*4ml |
| 16 | Diazepam 5mg / ml | Ampoule | 1*2ml | 45 | Neostigmine 0.5mg/2.5mg/ml | Ampoule | 100*1ml |
| 17 | Diclofena Sodium 25mg / ml | Ampoule | 5*3ml | 46 | Ondansetron 2mg / ml | Ampoule | 10*2ml |
| 18 | Dicyclomine Hydrochloride 10mg | Ampoule | 10*2ml | 47 | Paracetamol 10mg / ml | Vial | 50ml |
| 19 | Dobutamine 12.5mg/50mg / ml | Ampoule | 5*5ml | 48 | Paracetamol 150mg / ml | Vial | 15ml |
| 20 | Dopamine Hcl 40mg / ml | Ampoule | 5*5ml | 49 | Paracetamol 600mg / ml | Ampoule | 10*5ml |
| 21 | Drotaverine 20mg / ml | Ampoule | 10*2ml | 50 | Phentolamine 10mg / ml | Ampoule | 10*1ml |
| 22 | Erogocalciferol 200000IU / ml | Ampoule | 10*1ml | 51 | Piroxicam 20mg / ml | Ampoule | 5*2ml |
| 23 | Esmolol Hydrochloride 10 mg / 25mg / ml | Ampoule | 10*1ml | 52 | Phenobarbital Sodium 200mg/ 65mg/130mg /ml | Vial | 10*1ml |
| 24 | Ethamisylate 125mg / ml | Ampoule | 10*2ml | 53 | Prednisolone Sodium Phosphate 25mg/30mg / ml | Ampoule | 10*1ml |
| 25 | Frusemide 10mg / 20mg / ml | Ampoule | 10*2ml | 54 | Promethazine 25mg / ml | Ampoule | 10*1ml |
| 26 | Frusemide 50mg / 3ml | Ampoule | 10*2ml | 55 | Vitamin B1 100mg + B6 100mg + B12 1mg / 3ml | Ampoule | 5*3ml |
| 27 | Gentamicin 40mg / 80mg / 2ml | Ampoule | 10*3ml | | | | |
| 28 | Heparin Sodium 25000 IU / 5000 IU / 5ml | Ampoule | 10*2ml | | | | |
| 29 | Hysocine Bromide 20mg / ml | Vial | 5ml | | | | |
| | | Ampoule | 10*1ml | | | | |



INJECTION

SMALL VOLUME INJECTION

PHARMEXIM

| Sr.No. | Formulation | Dosage form | Packing | Sr.No. | Formulation | Dosage form | Packing |
|--------|---|-------------|-------------|--------|---|-------------|-------------------|
| 56 | Pentoxifyline 20mg | Ampoule | 5*5ml | 80 | Amoxycillin + Cloxacillin 500mg | Vial | 1 Vial |
| 57 | Quinine Dihydrochloride 300mg / ml | Ampoule | 10*2ml | 81 | Ampicillin Sodium 250mg + Cloxacillin Sodium 250mg | Vial | 1 Vial |
| 58 | Ranitidine 25mg / ml | Ampoule | 5*2ml | 82 | Meropenam 1gm | Vial | 1*10ml |
| 59 | Acetylcysteine 200mg / ml | Ampoule | 5*2ml | 83 | Meropenam 500mg | Vial | 1vial+WFI |
| 60 | Amiodarone Concentrate 50mg / ml | Ampoule | 10*3ml | 84 | Ampicillin + Sulbactam 1.5gm + Sterile Water for Injection | Vial | 120ml |
| 61 | Sodium Nitroprusside 50mg | Vial | 1*1ml | 85 | Flucloxacillin Sodium 500mg | Vial | 10*1vial |
| 62 | Tramadol Hydrochloride 50mg | Ampoule | 5*2ml | 86 | Methylprednisolone Sodium Succinate 500mg / 1000mg | Vial | Vial+ 4ml Diluent |
| 63 | Triamcinolone Acetonide 10mg/ 40mg / ml | Vial | 5*1ml | 87 | Piracetam 1gm | Ampoule | 12*5ml |
| 64 | Tranexamic Acid 100mg / ml | Injection | 5*5ml | 88 | Spectinomycin 2gm | Vial | 1 Vial |
| 65 | Cefoparazone 500 mg + Sulbactam 500mg for IM/IV | Vial | 20ml | 89 | Vancomycin 500mg | Vial | 1 Vial |
| 66 | Cefoparazone 1000 mg + Sulbactam 1000mg | Vial | 20ml | 90 | Esomeprazole Sodium 40mg (Coniloc-E) | Vial | 1*5ml |
| 67 | Cefoparazone 1gm | Vial | 20ml | 91 | Omeprazole 40mg | Vial | Vial+WFI |
| 68 | Cefotaxime 1gm | Vial | 5/10ml | 92 | Pantoprazole Sodium 40mg (Pentaconex) | Vial | 1*10ml |
| 69 | Cefotaxime 250 / 500 mg | Vial | 1vial + WFI | 93 | Naloxone Hydrochloride 400mg | Ampoule | 5*1ml |
| 70 | Ceftazidime 1gm | Vial | 20ml | 94 | Neostigmine Methylsulphate 0.5mg | Ampoule | 10*1ml |
| 71 | Ceftriaxone 250 / 500 mg | Vial | 1vial + WFI | 95 | Trimethoprim 80mg + Sulphamethoxazole 400mg + Propylene Glycol 40 % v/v | Ampoule | 5*5ml |
| 72 | Ceftriaxone 1gm | Vial | 10ml | 96 | Benzathine Penicillin 600000IU + Procain Penicillin 300000IU + Benzylpenicillin Sodium 300000IU | Ampoule | 50*1ml |
| 73 | Cefuroxime 1.5gm | Vial | 1vial | 97 | Procain Penicillin 300000IU + Benzylphenicillin Sodium 100000IU | Ampoule | 50*1ml |
| 74 | Cefuroxime 750mg | Vial | 1vial | | | | |
| 75 | Cloxacillin Sodium 500mg | Vial | 1vial | | | | |
| 76 | Ceftriaxone Sodium 1g + Sulbactam Sodium 500mg | Injection | 1*10ml | | | | |
| 77 | Cefotaxime Sodium 1g + Sulbactam Sodium 0.5g | Vial | 10ml+WFI | | | | |
| 78 | Cefepime 1g | Vial | 1g Vial | | | | |
| 79 | Amoxycillin 500mg | Vial | 1 Vial | | | | |
| 80 | Ampicillin 1gm | Vial | 1 Vial | | | | |



INJECTION

LARGE VOLUME INJECTION

PHARMEXIM



| Sr.No. | Formulation | Dosage form | Packing | Sr.No. | Formulation | Dosage form | Packing |
|--------|--|-------------|------------------|--------|-------------------------------------|-------------|---------|
| 1 | Paracetamol Infusion 1.0% w/v | Injection | 100ml FFS | 12 | Glucose 10% / 20% / 25% | Infusion | 500ml |
| 2 | Metronidazole I.V. Infusion 500mg / 100ml | Injection | 100ml FFS | 13 | Sodium.Chl. 0.11% + Glu.5% | Infusion | 500ml |
| 3 | Ciprofloxacin I.V. Infusion 0.2gm / 100ml | Injection | 100ml FFS | 14 | Sodium.Chl. 0.2% + Glu.5% | Infusion | 500ml |
| 4 | Linezolid I.V. Infusion 600mg / 300ml | Injection | 300ml FFS | 15 | Sodium.Chl. 0.33% + Glu.5% | Infusion | 500ml |
| 5 | Levofloxacin I.V. Infusion 500mg / 100ml | Injection | 100ml FFS | 16 | Sodium.Chl. 0.45% + Glu.5% | Infusion | 500ml |
| 6 | Ofloxacin I.V. Infusion 200mg / 100ml | Injection | 100ml FFS | 17 | Sodium Lactate 1.85% | Infusion | 500ml |
| 7 | Nimodipin 10mg / 50ml | Vial | 1*50ml | 18 | Ciprofloxacin 200mg / 100ml | Infusion | 100ml |
| 8 | Glucose 5% BP | Infusion | 500ml/ 1000ml | 19 | Glucose 25% | Infusion | 100ml |
| 9 | Sodium Chloride 0.9% + Glucose 5% | Infusion | 500ml/ 1000ml | 20 | Mannitol 20% (100/300/350/500ml) | Infusion | 100ml |
| 10 | Sodium.Chloride 0.9% / 0.45% / 1.6% | Infusion | 500ml/ 1000ml | 21 | Mannitol 10% (100/300/350/500ml) | Infusion | 100ml |
| 11 | Compound Sodium .Lact. (RingerLactate) | Infusion | 500ml/ 1000ml | 22 | Fluconazole 2mg / ml | Infusion | 100ml |

INJECTION

PHARMEXIM

Delivering Health Globally

+91 7867063844

www.pharmexim.in

support@pharmexim.in



PharmExim